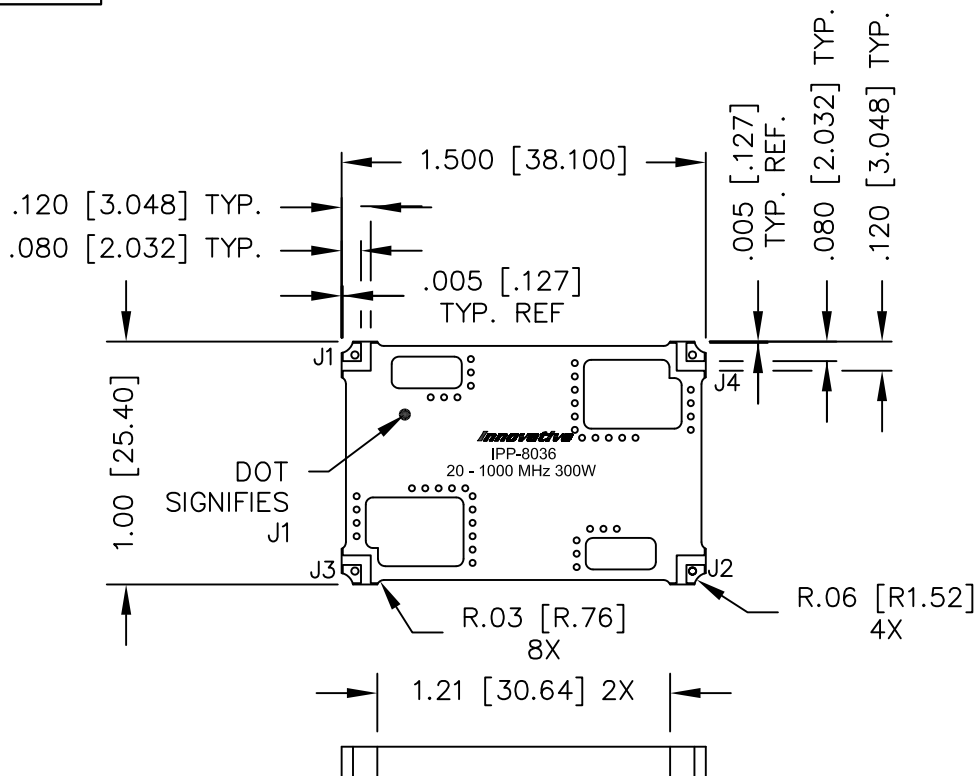
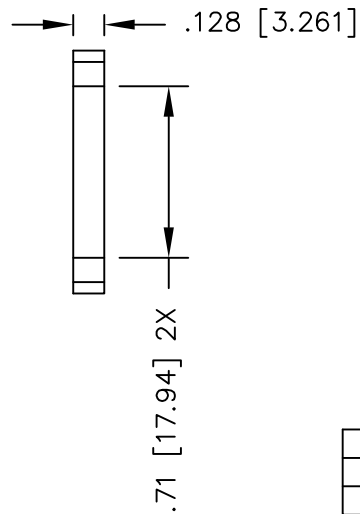


UNAUTHORIZED USE OF THIS
DRAWING IS STRICTLY PROHIBITED



DAR	REV	DESCRIPTION	APPVD	DATE
2615	A	INITIAL RELEASE	DG	8-10
2668	B	SEE DAR	TJD	8-10
2781	C	SEE DAR	DG	11-10
3008	D	SEE DAR	TJD	3-11
3012	E	SEE DAR	TJD	3-11
4190	F	SEE DAR	DG	3-13
4354	G	SEE DAR	DG	6-13
4448	H	SEE DAR	DG	7-13
4849	J	SEE DAR	DG	3-14
5113	K	SEE DAR	DG	8-14



NOTES:

1. SEE SMD COUPLER APPLICATION NOTE FOR FURTHER INFORMATION.
2. AVAILABLE IN TAPE AND REEL. SEE SMD COUPLER APPLICATION NOTE FOR FURTHER INFORMATION.
3. DO NOT EXCEED 220°C WHEN INSTALLING COUPLER.

ELECTRICAL SPECIFICATIONS

FREQUENCY:	20 - 1000 MHz.
INSERTION LOSS:	<0.35 dB
MAIN LINE VSWR:	<1.25:1
DIRECTIVITY:	>20dB
COUPLING:	50.0±1.5dB
COUPLED FLATNESS:	±0.6dB
POWER:	300 WATT
TEMPERATURE:	-55°C TO 85°C

FINISH	
P/N	TYPE
IPP-8036	TIN/LEAD

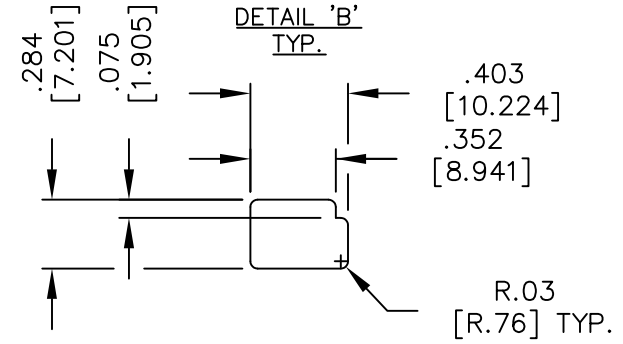
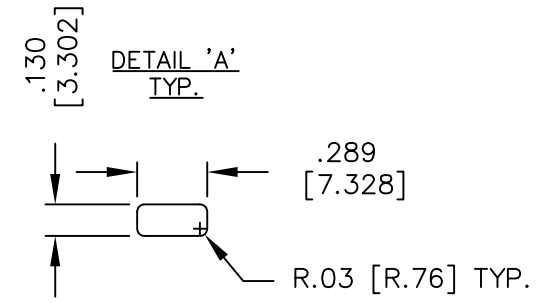
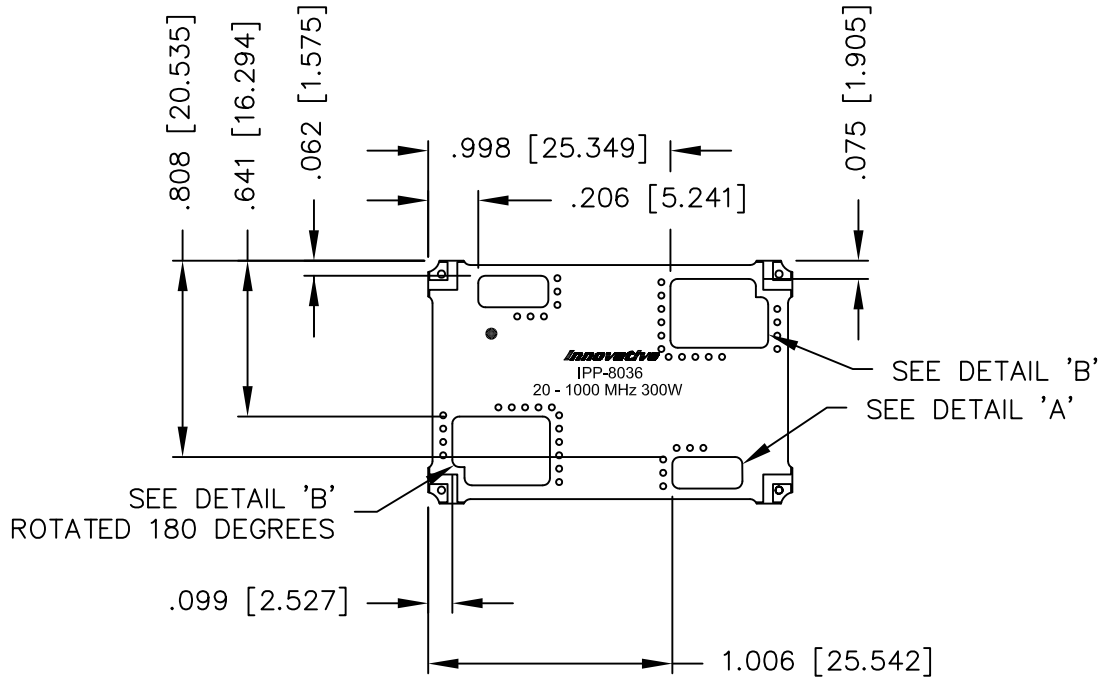
PORT CONFIGURATION			
INPUT	OUTPUT	FORWARD COUPLED	REFLECTED COUPLED
J1	J2	J3	J4
J2	J1	J4	J3

MATERIAL	DWN S.Cornell	DATE 6-14-10				
FINISH	ENG DG	DATE 6-10				
SEE FINISH CHART	MANUF	DATE	TITLE OUTLINE			
TOLERANCE	CAGE CODE: 437R2		SMD COUPLER, DDC, 20 - 1000 MHz. 300W			
.XX ±.02 [.50]	SHEET 1	OF 2	SCALE 2:1	SIZE B	P/N IPP-8036*	REV. K
.XXX ±.010 [.254]						
ANG. ±1/2°						

UNAUTHORIZED USE OF THIS
DRAWING IS STRICTLY PROHIBITED

DAR	REV	DESCRIPTION	APPVD	DATE
2615	A	INITIAL RELEASE	DG	8-10
2668	B	SEE DAR	TJD	8-10
2781	C	SEE DAR	DG	11-10
3008	D	SEE DAR	TJD	3-11
3012	E	SEE DAR	TJD	3-11
4190	F	SEE DAR	DG	3-13
4354	G	SEE DAR	DG	6-13
4448	H	SEE DAR	DG	7-13
4849	J	SEE DAR	DG	3-14
5113	K	SEE DAR	DG	8-14

POCKET DETAIL



MATERIAL	DWN S.Cornell	DATE 6-14-10				
	ENG DG	DATE 6-10				
FINISH SEE FINISH CHART	MANUF	DATE	TITLE OUTLINE			
	CAGE CODE: 437R2		SMD COUPLER, DDC, 20 - 1000 MHz. 300W			
TOLERANCE IN [MM]	.XX ±.02 [.50]	SHEET OF 2 OF 2	SCALE 2:1	SIZE	P/N IPP-8036*	REV. K
	.XXX ±.010 [.254]			B		
ANG. ±1/2°						